











# **WinEXIT** Version 3.20

*(for Windows NT)*

This Help file contains information on the WinEXIT utility program. Click the mouse on the topic you wish to see more information on. Click on the WinEXIT icon above for copyright information. For help with using Windows HELP, press F1 or select the **H**ow to Use **H**elp menu item in the **H**elp menu.

-  [Introduction to WinEXIT](#)
-  [Installing WinEXIT](#)
-  [Using WinEXIT](#)
-  [Configuring WinEXIT](#)
-  [WinEXIT System Menu](#)
-  [WinEXIT Command-Line Options](#)
-  [WinEXIT History and Technical Background](#)
-  [WinEXIT Copyright Information](#)



# **WinEXIT** Version 3.20

(for Windows NT)

## Introduction to WinEXIT

WinEXIT is one of those simple little programs that can make life a little easier. The purpose of this program is simply to allow you to double-click on an icon and logoff Windows NT™.

You can logoff Windows NT, or choose to shutdown Windows NT or reboot the whole machine. You can also configure WinEXIT to run from a folder in Program Manager and access WinEXIT's commands that way.

### **BUT DON'T WORRY!**

WinEXIT uses the same commands as the system does normally. So no work will be lost. For example, let's say you have EXCEL running with a spreadsheet you just created or modified, but haven't saved yet. EXCEL (and all running programs) will get notified by Windows NT that it is closing down, so you have a chance to save your work.



**WinEXIT** Version 3.20

(for Windows NT)

## WinEXIT Installation

Installation of the WinEXIT program is very simple. The normal installation procedure is to use the SETUP program. This Windows-based program installs WinEXIT into any directory of your choice. It then adds the WinEXIT program to your Startup folder in Program Manager. That way WinEXIT can start up and be available to use every time you log on to your Windows NT session. The program will load itself as an icon on the bottom of the screen. The program is set up to only allow only one copy of itself to run at any one time.

You can also install it as an entry in a different Program Manager folder. You can configure that folder entry to pass WinEXIT command-line options that immediately execute WinEXIT functions. See WinEXIT Command-Line Options for details on command-line options.

***See the Windows manual or Program Manager HELP for details on how to add programs to Program Manager folders (groups).***

### **See also:**

[Using WinEXIT](#)

[Configuring WinEXIT](#)

[WinEXIT System Menu](#)

[WinEXIT Command-Line Options](#)

[WinEXIT History and Technical Background](#)



# **WinEXIT** Version 3.20

(for Windows NT)

## Using WinEXIT

The operation of WinEXIT is very simple. When you run it without the command-line options, it loads up as an icon on the desktop. Double-click on that icon and WinEXIT will logoff or shutdown Windows. **That's all there is too it!**

Of course, there are other functions WinEXIT can perform. Specifically the ability to do a system shutdown or reboot the whole machine. These capabilities can be very useful when adjusting system settings, or when problems arise and you need to start from scratch.

There are 3 ways WinEXIT's commands can be accessed:

### **Double-click on the WinEXIT icon**

This is the normal way WinEXIT is used. The action of double-clicking on the WinEXIT icon is considered to be the *default action*. This *default action* can be set using the [WinEXIT Configuration Dialog Box](#). Here you can set which function (LOGOFF SESSION, SHUTDOWN MACHINE, REBOOT MACHINE) will be executed when you double-click on the WinEXIT icon.

### **Choose a menu item from WinEXIT's system menu**

The system menu contains all the possible WinEXIT commands. Click once on the WinEXIT icon to display the system menu. See the [WinEXIT System Menu](#) section for details.

### **Run WinEXIT using a command-line option**

See the [WinEXIT Command-Line Options](#) section for details.

*When performing a system shutdown or reboot, WinEXIT can instruct the operating system to display an abort dialog box for a specified time. This gives you time to abort a system shutdown. **To abort a system shutdown while the delay abort dialog box is displayed, simply double-click on the WinEXIT icon.** A message in the abort dialog box will state this as well.*

### **Please note:**

While Windows applications will be notified that a logoff or shutdown is happening, non-Windows apps (DOS apps) will not. The DOS box will simply be closed. [This behavior is different from Windows 3.1.](#) This means that any unsaved work you have using a DOS app will be lost. This is a good reason why you should specify that when a shutdown is initiated, an delay abort dialog box should be displayed. To see how to set that option, see the [WinEXIT Configuration Dialog Box](#) section.



## **WinEXIT** Version 3.20 (for Windows NT)

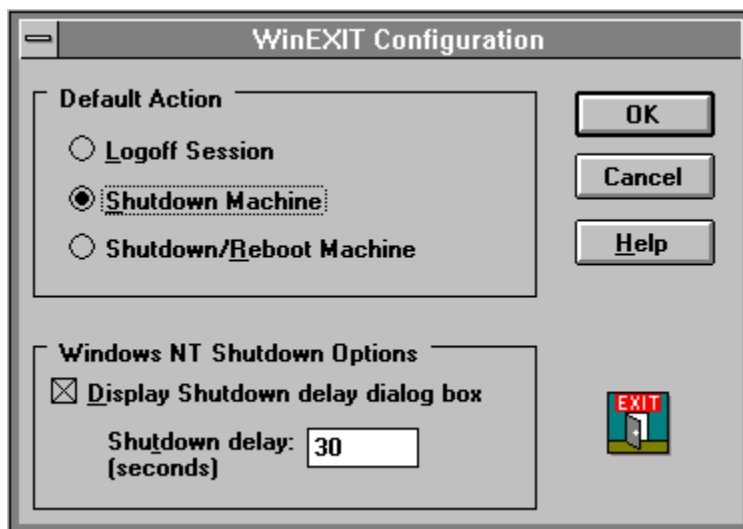
# WinEXIT Configuration Dialog Box

The WinEXIT configuration dialog box is used to change the default behavior (or action) of WinEXIT. The default action is when you double-click on the WinEXIT icon when it is running. Note that WinEXIT has a number of command-line options which override the default action. See [WinEXIT Command-Line Options](#) for details.

To display the Configuration Dialog Box, choose **Configure WinEXIT...** from the WinEXIT icon's system menu. To display and use WinEXIT's system menu, click once on the WinEXIT icon.

Below is the WinEXIT Configuration Dialog Box. To get a description on each part of the dialog box, click once on the part in question to receive Help.

**WinEXIT Configuration Dialog Box**



**See also:**

[Using WinEXIT](#)

[WinEXIT System Menu](#)

[WinEXIT Command-Line Options](#)



## **WinEXIT** Version 3.20

(for Windows NT)

# WinEXIT System Menu

All WinEXIT functions can be accessed from the WinEXIT icon's system menu. To display and use WinEXIT's system menu, click once on the WinEXIT icon. If you choose either shutdown system or reboot from the system menu, WinEXIT will use any shutdown options you specified in the WinEXIT Configuration Dialog Box.

Below is the system menu of the WinEXIT program. To get a description of what each item means, click once on the menu item in question.

### WinEXIT System Menu

<b>Logoff Session</b>	
<b>M</b> ove Icon	
<b>C</b> lose	<b>Alt+F4</b>
<b>S</b> witch To...	<b>Ctrl+Esc</b>
<b>S</b> hutdown Machine	
<b>S</b> hutdown/ <b>R</b> eboot Machine	
<b>C</b> onfigure WinEXIT...	
<b>A</b> bout...	
<b>H</b> elp	

#### **See also:**

[Using WinEXIT](#)

[Configuring WinEXIT](#)

[WinEXIT Command-Line Options](#)



## **WinEXIT** Version 3.20

(for Windows NT)

# WinEXIT Command-Line Options

There are a number of command-line options for WinEXIT. These options allow you to execute WinEXIT's functions from a Program Manager folder without loading up WinEXIT as an icon. This feature is useful when you want to leave WinEXIT in a folder and make different entries for each of the functions. For example, one entry would logoff the current session. Another would shutdown the machine. This method can also be used to put WinEXIT on desktop toolbars and toolboxes, such as the shareware program WinDock, or hDC's Power Launcher™.

The following is the list of options. Upper or lower case doesn't matter. Of course, only one option can be used at a time. Click on each option for a description. The options are:

- \_\_\_\_\_ /LOGOFF
- \_\_\_\_\_ /SHUTDOWN
- \_\_\_\_\_ /SHUTDOWN : *n*
- \_\_\_\_\_ /REBOOT
- \_\_\_\_\_ /REBOOT : *n*

Note that there are **no** spaces between the slash (/) and the first letter of the option.

### **See also:**

[Using WinEXIT](#)

[Configuring WinEXIT](#)

[WinEXIT System Menu](#)



## **WinEXIT** Version 3.20 (for Windows NT)

# WinEXIT History and Technical Background

## WinEXIT History

Well, when I first wrote WinEXIT, I just got my hands on Windows 3.0. DOS box support and general stability was horrendous under 2.x, so I was a little afraid to trust it even with this new version. Also, being a developer, I have a tendency to screw around a bit with programs and operating systems in ways they were not meant to be screwed around with. So there were many times where I would change system settings and have to go through Program Manager to exit Windows and restart it for the new settings to take effect. That got to be a long and tedious procedure. Then I found out about the system call to exit Windows, just like Program Manager does.

*The rest, as they say, is history!*

Now with Windows NT, there are new reasons for something as simple as WinEXIT. Since the purpose of the original WinEXIT program was to have a simple way to "exit Windows", that concept is carried on with this version. Since there is no "*exit to DOS*" with Windows NT, WinEXIT under Windows NT now takes on new commands. These commands are: LOGOFF SESSION, SHUTDOWN MACHINE, REBOOT MACHINE.

## A Little Technical Background

WinEXIT uses the standard Windows NT system calls to perform all its functions. When you execute one of those functions, the Windows NT Operating System sends a message to all the programs that are running that it is about to shutdown the system. This is the same no matter if you pick LOGOFF SESSION, SHUTDOWN MACHINE, or REBOOT MACHINE. All Windows programs (at least the ones that are well-behaved and follow the rules) that need to save data somewhere before it closing down respond to this message. Programs such as word processors, database programs, any program that stores its information elsewhere when it is not running.

Using a word processor as an example, when the word processing program receives the shutdown message it would first check to see if the document has been changed and not saved to disk. If this is true, then the program would prompt you to save the document. If you save the document, then the application would return a value to Windows signaling that, as far as this program is concerned, Windows can shut down the system. If you choose not to save the document, then the application returns a value signaling that Windows cannot shut down yet. The system shutdown procedure would stop right there.

### **Please note:**

While Windows applications will be notified that a logoff or shutdown is happening, non-Windows apps (DOS apps) will not. The DOS box will simply be closed. This behavior is different from Windows 3.1. This means that any unsaved work you have using a DOS app will be lost. This is a good reason why you should specify that when a shutdown is initiated, an delay abort dialog box should be displayed. To see how to set that option, see the WinEXIT Configuration Dialog Box section.



## System Menu

The menu farthest to the left in the title bar, indicated by a Spacebar icon. The System Menu, also known as the Control Menu, appears on every application that runs in a window and on some non-Windows applications. Document windows, icons, and most dialog boxes all have system menus.

For application windows, document windows, icons, and dialog boxes, the standard system menu commands include *Move*, *Size*, and *Close*. You can also switch to the Task List by using the system menu option *Switch to...* . For non-Windows applications, the system menu contains commands for transferring information back and forth between the clipboard and perform other functions, depending on the application.

## Icon



Icons are a visual representation of either a physical or abstract object. For example, the above icon represents the WinEXIT program. Icons can represent a disk drive, a directory, a group folder, an application, or a document.

## **Folder**

A window that displays the items of a group in Program Manager. These items can be applications, files associated with applications, or a combination of both. Folders, also known as groups, are useful in organizing your programs and data files for easy access.

## **Startup Folder**

This is special Program Manager folder. Any application defined in this folder will be run when Windows first starts up.

/LOGOFF

## **Command-line option**

This command-line option will immediately execute a session logoff.

/SHUTDOWN

## **Command-line option**

This command-line option will immediately execute a system shutdown. It will ***not*** display the shutdown abort dialog box.

`/SHUTDOWN : n`      **Command-line option**

This command-line option will execute a system shutdown. The value entered for *n* is the number of seconds you wish to display the shutdown abort dialog box. If the value is zero, then it is the same as not specifying this value at all. The maximum value is 999 seconds.

/REBOOT

## **Command-line option**

This command-line option will immediately execute a system shutdown and reboot. It will ***not*** display the shutdown abort dialog box.



/REBOOT : *n*

### **Command-line option**

This command-line option will immediately execute a system shutdown and reboot the machine. The value entered for *n* is the number of seconds you wish to display the shutdown abort dialog box. If the value is zero, then it is the same as not specifying this value at all. The maximum value is 999 seconds.

## **WinEXIT System Menu**

### **Logoff Session**

This menu item, when chosen, will perform a session logoff.

## **WinEXIT System Menu**

### **Shutdown Machine**

This menu item, when chosen, will perform a system shutdown.  
The delay abort dialog box will display, if chosen in the  
Configuration Dialog Box .

## WinEXIT System Menu

### Shutdown/Reboot Machine

This menu item, when chosen, will perform a system shutdown and then reboot the machine. The delay abort dialog box will display, if chosen in the Configuration Dialog Box .

## WinEXIT System Menu

### Move Icon

This menu item, when chosen, will allow you to position the WinEXIT icon on the desktop. It is the same as the standard **M**ove system menu entry.

## **WinEXIT System Menu**

### **Close**

This menu item, when chosen, will close the WinEXIT program.

## **WinEXIT System Menu**

### **Switch to...**

This menu item, when chosen, will bring up the Task Manager program. Same as in all system menus.

## WinEXIT System Menu

### About...

This menu item, when chosen, will display the ABOUT dialog box. This contains copyright and version information about WinEXIT.



## **WinEXIT System Menu**

### **Help**

This menu item, when chosen, will bring up this HELP file.

## WinEXIT System Menu

### **Configure WinEXIT...**

This menu item, when chosen, will bring up the Configuration Dialog Box and allow you to change WinEXIT's options.

## **WinEXIT Configuration Dialog Box**

### **Logoff Session**

This item, when chosen, will have WinEXIT logoff the current session when the WinEXIT icon is double-clicked.

## WinEXIT Configuration Dialog Box

### **Shutdown Machine**

This item, when chosen, will have WinEXIT perform a system shutdown when the WinEXIT icon is double-clicked. The delay abort dialog box will display, if the item **Display Shutdown delay dialog box** is checked.

## WinEXIT Configuration Dialog Box

### Shutdown/Reboot Machine

This item, when chosen, will have WinEXIT perform a system shutdown and machine reboot when the WinEXIT icon is double-clicked. The delay abort dialog box will display, if the item **Display Shutdown delay dialog box** is checked.

## WinEXIT Configuration Dialog Box

### Display Shutdown delay dialog box

If this item is checked, then during a system shutdown a dialog box will display informing the user that the system is about to shutdown. This dialog box item is active only if either **Shutdown Machine** or **Shutdown/Reboot Machine** items are chosen. You must set a time delay value. The default value is 30 seconds

## WinEXIT Configuration Dialog Box

### Shutdown delay (seconds)

Here you specify how long (in seconds) the shutdown delay abort dialog box will display. This dialog box item is active only if the **D**isplay **S**hutdown **d**elay **d**ialog **b**ox item is checked.

The maximum value is 999. The default value is 30 seconds

## **WinEXIT Configuration Dialog Box**

### ***OK button***

Press this button to accept and save any changes made to this dialog box.



## **WinEXIT Configuration Dialog Box**

### ***Cancel button***

Press this button to abort and not save any changes made to this dialog box.

## **WinEXIT Configuration Dialog Box**

### ***HELP button***

Press this button to display Help on using the Configuration Dialog Box.

# Copyrights

## **WinEXIT**    **Version 3.20**

Silverware Consulting  
Copyright ©1991-1993 by Howard Silver  
CompuServe address - 76675, 3476

Silverware and WinEXIT are trademarks of Silverware Consulting.  
This product is distributed as FREeware.

This product was developed using Microsoft Visual C++™ Version 1.0 and MFC Version 2.0. It was compiled using the Windows NT™ SDK tools. This help file was created using Microsoft Word™ Version 2.0a.

**Other trademarks:**

Power Launcher is a trademark of hDC Computer Corporation.  
Microsoft, Windows, Visual C++, Microsoft Word, and Windows NT are trademarks of Microsoft Corporation.

*Special thanks to Harry Field.*



